



ESSILOR INSTRUMENTS PRODUCT CATALOGUE



Contents

INTRODUCTION – MORE THAN PRODUCTS

Contact info - local teams	4
Intro Essilor Instruments	5

1. OPTOMETRY

ATNC 550	9
SL 650	10
SL 550	12
SL 450	13
SL 400	13
Takagi 700GL slit lamp	14
Takagi 4ZL slit lamp	15
Vision-S 700	16
Vision-R 700	17
Vision-R 800	18
APH 550	19
MPH 150	19
AKR 800	20
AKR 550	21
AKR 300	21
TRK-2P	22
ALM 800	23
ALM 700	24
ALM 500	24
CS POLA 600	25
CS 550	26
CP 550	26

2. MEASUREMENTS

Visioffice X	30
Visioffice 3	31
WAM 800	32
VR 800 / AVA	33

3. EYE HEALTH

IDRA	36
Activa	37
Den100	37
DSL200	37
E-Eye	38
Tearstim	39
Expert Myopia Care	40
OCT	41
Retina 800	42
Cornea 550	43
Medmont Meridia	44
Medmont M700	45

4. FINISHING

Delta series	48
Neksia series	49
ES 800	50
ES 700	51
PROE 600	52
PROE 700	52
TESS	54
E-TESS	54
PROB 300	54
ESSIBOX	56

5. FURNITURE

OST 350	60
OST 250 / 250H	61
OST 150	62
OST 100	63
TAM 50	64
STOOLS	64

6. LOCAL PRODUCTS

Henson 9000	68
M'Eye E.Store	69
Keeler Direct Ophthalmoscopes	70
Essilor Total	71

Contact your local Essilor Instrument department

UK, Ireland, Nordics and Benelux

BELGIUM

Essilor Instruments

Keizer Karellaan 586
Avenue Charles Quint 586
1082 St Agatha Berchem /
1082 Berchem-Sainte-Agathe
T +32 (0)2 559 72 11
instrumentsbe@essilor.be

Netherlands

Essilor Instruments

Eduard van Beinumstraat 24
1077 CZ Amsterdam
T +31 (0) 088- 0888111
Instrumenten@essilor.nl

UK & IRELAND

Essilor Instruments

Cooper Road,
Thornbury, Bristol,
BS35 3UW
+44 01454 423457
gbinstruments@essilor.co.uk

DENMARK

Essilor Instruments

Hedegaardsvej 88
2300 København S
Tlf. 53868500
instrument@essilor.dk

FINLAND

Essilor OY

Instruments
Lämmittäjänkatu 2
00880 Helsinki
tel +358 9 3480800
instruments@essilor.fi

NORWAY

Essilor Norge

Instrumentavdelingen
Dyrmyrgata 35
Pb. 8, 3611 Kongsberg
Tlf. 32 72 60 00
instrumenter@essilor.no

SWEDEN

Essilor AB

Instrumentavdelningen
Fagerstagatan 18A
163 08 Spånga
Tel. 08-621 26 00
instrument@essilor.se



ESSILOR
INSTRUMENTS

a part of
EssilorLuxottica

ESSILOR INSTRUMENTS

MORE THAN PRODUCTS

Essilor Instruments provides a wide range of cutting-edge technology, bringing you access to innovative equipment in order to deliver the very best in patient care. We aim to provide pioneering optical instruments to meet the needs of eye care professionals, helping to improve efficiency and quality of service. With the right instruments, you can also strengthen your trusted relationships with patients and inspire loyalty and satisfaction.



Essilor Instruments is a leader in visual screening tools, along with diagnostic and imaging equipment, providing the latest in measuring and connectivity solutions. Over the last few years, Essilor Instruments has won five Silmo d'Or innovation awards.

With more than 160 years of innovation and expertise, our mission has been to help improve lives by improving sight. Essilor optical instruments are distributed across more than 100 countries around the world.

Choose from refractometers, aberrometers, phoropters, OCTs, topographers, tonometers and more; not forgetting ergonomic furniture for your practice too.

Why choose Essilor?

Meet your patients' needs and find the right optical instruments that can really make a difference. Founded in 1972, we invest millions into research and development to provide effective solutions for independent opticians. We have more than 20 research partnerships with universities and public research organisations.

We also have a commitment to sustainability, and have often been recognised as one of the world's best performing companies in terms of sustainable development. As we continue to meet new vision challenges, our optical instruments are becoming more tailored to the needs of every individual. Innovation is at the heart of everything we do, bringing the latest optical technology to independent opticians across the country and beyond.

In addition, the Essilor Instruments division has a dedicated team supporting Eye Care Professionals. We offer technical advice, sales support, training and financial / rental solutions.



NKCZO

OZDVK

==DKSNV==

HRKDS

YHCNO

DDKKA

DDKKA

DDKKA

DDKKA

DDKKA

DDKKA

DDKKA

DDKKA

DDKKA

DDKKA

DDKKA

DDKKA

DDKKA

DDKKA

DDKKA

DDKKA

DDKKA

DDKKA

DDKKA

DDKKA

DDKKA

DDKKA

DDKKA

DDKKA

DDKKA

DDKKA

DDKKA

DDKKA

DDKKA

DDKKA

DDKKA

DDKKA

DDKKA

DDKKA

DDKKA

DDKKA

DDKKA

DDKKA

DDKKA

DDKKA

DDKKA

DDKKA

DDKKA

DDKKA

DDKKA

DDKKA

1

OPTOMETRY

ATNC 550

NON-CONTACT TONOMETER

.....
An indispensable device in the glaucoma decision making process



Measurement	1 to 60mmHg or 0.1 to 8kPa
No measurement	1mmHg or 0.1kPa
Accuracy	±5mmHg or ±0.7kPa
Working distance	11mm
Measurement unit	Back/forth ±22mm Right/left ±43mm Up/down ±17mm
Screen size	5.7"
Power saving function	3, 5, 10min
Printer	Thermal printer
Connectivity	RS-232C
Dimensions	422 (L) x 240 (W) x 430 (H) mm
Weight	13kg
Power Supply	100 to 240V - 50/60Hz



Soft air puff to enhance patient comfort.



IOP value automatically corrected based on central corneal thickness.

SL 650 / SL 650⁺

SUPERIOR IMAGE QUALITY

.....

Antibearum erchill abores ma quia ea dolumentorum dent.

Enhance the eye exams and patient management with the SL 650 digital slit lamp by easily taking high-resolution images and videos to facilitate diagnosis and monitoring over time. Thanks to its smart design and powerful software, you can now analyze and compare multiple images of the anterior and posterior chamber, monitor functional signs and examine the patient's Meibomian glands. A complete and hassle-free eye assessment that you can also share with your patients. Upgrade to the SL 650+ for complete dry eye diagnostic capacities.



Improved image quality and facilitated diagnosis

- Maximize accuracy and comfort with a high quality optics
- HD digital system records all details in high-resolution image and video for precise and detailed assessment
- Integrated yellow and blue-cobalt filters provide high contrast fluorescein images for easy & accurate contact lens fitting

Digitally optimized patient management

- Integrated Anaeyes SL software and DICOM support mean easy patient management, from the creation of patient to follow up over time
- Easily record and share high-quality images with patients
- Clear results help educate patients and build trust

Simplified ergonomics, enhanced analysis

- Automatic functions, easy installation and built-in power supply
- An advanced integrated infrared system to assess meibography
- Measure pathology, edit image settings, and compare multiple pictures and follow-up patient

Upgrade easily to the SL 650+ for a complete dry eye report

- 5 comprehensive and non-invasive tests for a complete dry eye assessment, including: meibography, NIBUT (Non Invasive Break Up Time), eye redness analysis, tear meniscus height, and Lipid layer thickness
- Advanced software and AI-powered identification system conduct accurate analysis of imaging
- Generate and share a complete Dry Eye Report with patients

Microscope	
Microscope type	Galilean type
Magnification change	Revolving drum 5 steps
Total Magnification	6.3x, 10x, 16x, 25x, 40x
Optical Resolution	2700 N lp/mm (200 lp/mm)
Eyepieces	12.5x
Angle between Eyepieces	10°
Pupillary adjustment	52mm-80mm
Diopter adjustment	-8D~+8D
Field of view	Ø36.2mm, Ø22.3mm, Ø14mm, Ø8.9mm, Ø5.7mm
System specifications	
Digitale module	Automatic exposure/Automatic white balance/Adjustable depth of field and aperture
Image sensor	1/1.8-inch sensor/2.4µm pixel/5.0M pixels
Photo resolution	2592 x 1944
Format	jpeg
Video resolution	2592 x 1944
Frame of video	25fps
Video formats	MP4 H. 264
Exposure mode	Automatic exposure
Transmission interface	USB
Software	Anaeyes SL.
Power supply	
Input voltage	~100V-240V
Input frequency	50Hz/60Hz
Rated current	1.2A
Output voltage	LEd 3V, Fixation 15V
Computer specifications	
PC configuration	i5-10500T 8G memory 250GB SSD+1TB storage
Display	1920x1080 23.8 inch
PC system	Windows 10 / Windows 11
Packaging	
Dimension	740mm x 450mm x 530mm (L/W/H)
Gross weight	23kg
Net weight	17kg
Slit illumination	
Slit width	0~14mm continuous (slit becomes a circle at 14mm)
Slit length	1~4mm continuous
Aperture diameters	Ø14mm, Ø10mm, Ø5mm, Ø3mm, Ø2mm, Ø1mm, Ø0,2mm
Slit angle	0°
Slit inclination	5°, 10° 15° 20°
Filters	Heatabsorbing filter, ND filter, Red-free filter, Cobalt blue filter. Built-in eye yellow filter
Lamp	LED
Luminance	≥150klx

Dry eye module

AI non-invasive tear break up time

- AI identify the break up area time
- Automatic first break up time
- Automatic average break up time
- Visible light Placido ring projection (23 ring)

AI Meibomian glands function

- Evaluation
- AI identify Meibomian glands
- Automatic Meibomian glands loss classification

Eyelid Margin

- Optical magnification
- Electronic amplification

AI non-invasive tear meniscus height

- AI identification system
- Automatic non-invasive tear meniscus height
- Optical magnification
- Electronic amplification

Lipid layer thickness

- Template comparison evaluation
- Visible light White ring projection system

Dry eye examination report

- Automatic analysis report

AI conjunctival hyperemia analysis

- AI identification system
- Automatic conjunctival congestion percentages
- Automatic ciliary congestion percentages

Cornea sodium fluorescein staining

- Eye surface damage report
- Built-in yellow filter
- Cobalt blue filter



SL 550

PREMIUM SLIT LAMP

The professional solution for complete examinations of the anterior eye structure

Lighting system	High
Magnification	Drum, 5 steps
Magnification range	6 x (37mm) 10 x (24mm) 16 x (14mm) 25 x (8mm) 40 x (5.2mm)
Illumination type	LED
Magnification type	Convergent Galilean
Filters	Cobalt blue - Green - Red - Grey - Yellow (optional)
Slit angle	0° to 180°
Slit length	1mm to 14mm
Slit width	0mm to 14mm
Standard eyepiece	12.5 x
Pupillary distance	52mm to 78mm
Tilt	0°, 5°, 10°, 15°, 20°
Accessories	Yellow filter / diffuser filter / background light
Options	Tonometer / polarized filter / micrometric eyepiece / observation tube
Connectivity	Yes ANA EYES

High quality optics and cutting-edge LED illumination.

5 magnification levels.

Many slit adjustments and light tilting features.

Wide range of filters: cobalt blue, green, red, neutral density.

Integrated yellow filter and background illumination.

HD Digital camera DS 550 (optional).

SL 450 SL 400 SLIT LAMP



Essential features to fit most eye

Lighting system	High (SL 450) / Low (SL 400)
Magnification	Drum, 5 steps
Magnification range	6 x (37mm) 10 x (24mm) 16 x (14mm) 25 x (8mm) 40 x (5,2mm)
Illumination type	LED or Halogen
Magnification Type	Galilean
Filters	Cobalt blue / Green / Anti-caloric (for halogen lighting) / Grey / Yellow (optional)
Slit angle	0° to 180°
Slit Length	1mm to 14mm
Slit width	0mm to 14mm
Standard Eyepiece	12.5 x
Pupillary distance	48.5mm to 80mm
Tilt	0° (horizontal)
Accessories	Yellow filter / Diffuser filter / Background light
Options	Tonometer / polarized filter / micrometric eyepiece / observation tube
Connectivity	-



Classic Galilean typemicroscope.

Easy selection of magnification by rotating drum.

Tilt tower up to 20° (SL 350/SL 450).

Standard filters: thermal safety, cobalt blue and green (red-free).

Halogen or LED illumination source.

Continuous adjustment of the slit aperture with 14mm aperture.

Optional accessories



To expand and enhance the power of your slit lamp, discover our wide range of accessories on www.meyestore.com



TAKAGI 700GL SLIT LAMP

.....
 This slit lamp is the number one performer behind the scenes.



New LED Optimized Slit Lamp

- One of the best advantages of LED illumination is that affected anatomy and structures of the eye can now be more clearly and visibly seen.
- By simply replacing the halogen light source with an LED type, 700GL has been designed and engineered from scratch to accommodate the new superior LED lamp.
- LED optimized 700GL provides brighter and sharper light.

Clear Observation of both Anterior and Posterior Segments of the Eye

- As a result of our continuous pursuit in improving visibility of the fundus while simultaneously maintaining superior visibility of the anterior segment, the best, brightest, and sharpest optical design of 700GL has been achieved.
- 700GL's binocular tubes with a 6-degree convergence provide easy binocular fusion ensuring a stress free observation.

Extended Slit Length

- The diameter of the slit length is extended to 14mm from 10mm. This allows 700GL to illuminate a wider area of the anterior segment.
- This allows 700GL to maximize it's characteristics such as a wider field of view.

Improvement of Usability

- The size, placement and other features of various controls are reconsidered based on ergonomics in order to enhance usability.

Built-in Background Illumination

- For use with an imaging system, the background illumination is now equipped as standard.
- The color balance of an image taken through 700GL is not lost because the same LED is used for both main light source and background illumination.
- Intensity of the background illumination is adjustable by hand using the lower left hand side control.

Innovative Design: No cables are exposed. Even the power supply cable is concealed

Conventional power cable from the chinrest to the light housing has been eliminated - now neatly concealed inside the slit lamp body

700GL looks neat and compact with no exposed cables, giving a sleek look with an innovative design.

Even cables for connecting an imaging system can be concealed

New product color. Background illumination also discreetly built in with no exposed cables



The availability of the product will vary depending on the market



TAKAGI 4ZL SLIT LAMP

A simple and practical slit lamp ideal for routine examinations



High-grade Slit Lamps without a cable

- 4ZL: High-performance with a 5-step magnification changer
- 2ZL: Excellent performance with a 3-step magnification changer
- Innovative Design: No cables are exposed. Even the power supply cable is concealed.
- Even cables for connecting an imaging system can be concealed.
- New product color

Converging Binoculars

- Binocular tubes with a 6-degree convergence provide easy binocular fusion, ensuring stress-free observation.



Improvement of Usability

- The size, placement and other features of various controls are reconsidered based on ergonomics in order to enhance usability

Built-in Background Illumination (4ZL only)

- For use with an imaging system, the background illumination is now equipped in 4ZL as standard.
- The color balance of an image taken through 4ZL is not lost because the same LED is used for both main light source and background illumination.
- Intensity of the background illumination is adjustable by hand using the lower left hand side control.

Reduction of Patient's Uneasiness

- When 4ZL / 2ZL are switched on, a circular blue LED lights up around the lower part of the slit unit, which does not disturb the examination. The blue LED light is associated with mental calmness, reducing patient's uneasiness.
- Because the circular blue LED indicates the power is on, the users can examine with 4ZL / 2ZL at ease.

Various Options

- Patient's hand rests and various other options for 4ZL/2ZL are available according to users' requirements and application.

The availability of the product will vary depending on the market

VISION-S 700

PHOROPTER

Immersive refraction station



Change your business potential with just one device. The Vision-S 700 is a complete refraction room concentrated into one immersive station, expanding your refraction capacity through speed, ease of use and ultra compact size. The unique patient experience not only drives traffic but also helps convert sales.

Centering	
Pupillary Distance	49.0 to 80.0mm at far distance (in 0.50mm steps) 55.0 to 83.0mm at near distance (in 0.50mm steps)
Vertex Distance	From 4.0 to 30.0mm in 0.5mm steps, monocular, measured by cameras
Measuring range	
Sphere	From -20.00D to +20.00D
Cylinder	Up to 8.00D depending on the lens combination. Cylinder from -7.00D to 8.00D with sphere at 0D - In "Standard" mode: 0.25D increments with adjustable steps - In "Intelligent" mode: multiple larger and smaller increments
Axis	0° to 180° in 1° increments, with adjustable steps
Prisms	0 to 20Δ in 0.1Δ increments, with adjustable steps
Auxiliary lenses	
Occluders	Dark
Pinhole	Yes
Retinoscopy lenses	+1.50D, +2.00D (powered by optical module)
Fog Lenses	+1.50D, +2.00D (powered by optical module)
Jackson Cross Cylinders	±0.25D, ±0.50D (powered by optical module)
Fixed Cross Cylinders	±0.50D (powered by opticalmodules)
Prisms	3Δ base up, 3Δ base down, 6Δ base up, 10Δ base in (powered by varying prisms / diasporameters)
Maddox rods	Red, horizontal and vertical
Red/green filters	Red on right eye, green on left eye
Dimensions and weight	
Compact refraction unit	Length = 64.0cm. Width: 32.5cm. Depth: 55.0cm. Total weight: 16Kg
Console (keyboard + screen)	Keyboard: 28 x 22cm. Screen display: 10.4". Total weight: 3.0Kg



Eliminating the need for the traditional chart distance, freeing up the space to grow your business.

Patented algorithms combined with the optical module enabling Digital Infinite Refraction™ to ensure an accurate refraction in only 3 minutes.

Fully accessible to operators of varying levels.

Patented immersive imaging creates a truly unique patient experience and relaxed accommodation.

Prescription can be demonstrated in action with patented life-like scenarios, helping to increase lens conversion.

3 out of 4 people prefer being tested on the Vision-S 700 compared to a traditional phoropter.



Console



Product not yet available worldwide, please check availability with your business contact.

VISION-R 700

PHOROPTER

Fast and secured refraction



In the past, obtaining a faster refraction meant trading-off on accuracy. This is no longer the case. Thanks to Essilor's breakthrough refraction technology, the Vision-R 700 provides an ultra rapid 3-minute refraction. This easy-to-use phoropter makes exceptional performance the new standard, greatly adding to patient comfort and building customer loyalty.

Centering	
Pupillary Distance	49.0 to 80.0mm at far distance (in 0.50mm steps) 55.0 to 83.0mm at near distance (in 0.50mm steps)
Convergence	Automatic, compared to the position of the target for near vision and to the patient's pupillary distance
Vertex Distance	From 4.0 to 30.0mm in 0.1mm steps, monocular, measured by cameras
Measuring range	
Sphere	From -20.00D to +20.00D
Cylinder	up to 8.00D dependent on lens combinations - in "Standard" mode: 0.25D increments with adjustable steps - in "Intelligent" mode: multiple smaller and larger steps which round to 0.25D
Axis	0° to 80° in 1° increments, with adjustable steps
Prisms	0 to 20Δ in 0.1Δ increments, with adjustable steps
Auxiliary lenses	
Occluders	Dark
Pinhole	Yes
Retinoscopy lenses	+1.50D, +2.00D (powered by optical module)
Fog Lenses	+1.50D, +2.00D (powered by optical module)
Jackson Cross Cylinders	±0.25D, ±0.5D (powered by optical module)
Fixed Cross Cylinders	±0.50 D (powered by opticalmodules)
Prisms	3Δ base up, 3Δ base down, 6Δ base up, 10Δ base in (powered by varying prisms / diasporameters)
Maddox rods	Red, horizontal and vertical
Red/green filters	Red on right eye, green on left eye
Polarized filter	Both linear and circular
Dimensions and weight	
Head of the phoropter	Width: 29.6cm at top - 21.9cm at bottom / height = 22.2cm. Depth: 8.4cm at top - 6.5cm at bottom. Total weight: 3.5Kg
Console (keyboard + screen)	Keyboard: 28x22cm. Screen display: 10.4". Total weight: 3.0Kg
Power supply	Length: 16.3cm Width: 19.3cm. Depth: 5.8cm. Total weight: 1.0Kg



Unique optical module permitting multiple incremental power changes to secure a rapid 0.25D proven accuracy.

Simultaneous lens changes for a more direct & controlled refraction method: Digital Infinite Refraction™.

Patient specific program recommendation for guidance from start to finish.

Smart Programs for easy refraction by simply recording patient answers.

Improved patient experience thanks to a wider field of view, silent lens changes and easy answering method.

Instant power changes for easy comparison and patient confidence.



Console



Chart screen



Phoropter head

Product not yet available worldwide, please check availability with your business contact.

VISION-R™ 800

PHOROPTER

Reinventing refraction



For many years, subjective refraction techniques have hardly changed. Today, Vision-R 800 phoropter offers continuous power changes and makes refraction more precise, easier to perform for the practitioner and more comfortable for the patient!

Centering	
Pupillary Distance	50.0mm to 80.0mm in 0.1mm steps Binocular and monocular adjustments
Convergence	Automatic, in relation to near vision chart location and patient's inter-pupillary distance
Vertex Distance	From 8.0mm to 30.0mm in 0.1mm steps Monocular and measured by cameras
Measuring range	
Sphere	From -20.00D to +20.00D
Cylinder	Up to 8.00D For both sphere and cylinder: - In "standard" mode: 0.25D increments, adjustable to 0.05, 0.10, 0.25, 0.50, 1.00 and 2.00D - In "smart" mode: 0.01D increments
Axis	0° to 180° in 1° increments, with adjustable steps to 5°, 10°, 20°, 45° and 90°
Prisms	0Δ to 20Δ in 0.1Δ increments, with adjustable steps to 0.5, 1, 2, 3 and 6Δ
Auxiliary lenses	
Occluders	Dark and translucent
Pinhole	Yes
Retinoscopy lenses	+1.50D, +2.00D (powered by optical module)
Fog Lenses	+1.50D, +2.00D and manual (powered by optical module)
Jackson Cross Cylinders	±0.25D, ±0.50D (powered by optical module)
Fixed Cross Cylinders	±0.50 D (powered by opticalmodules)
Prisms	3Δ base up, 3Δ base down, 6Δ base up, 10Δ base in (powered by varying prisms / diasporameters)
Maddox rods	Red, horizontal and vertical
Red/green filters	Red on right eye, green on left eye
Polarized filter	Both linear and circular
Connectivity	
Connectivity	Data import from most lensmeters and auto-refractometers Data export to most practice management softwares
Printer	Optional.
Power	
Power supply	AC 100V to 240V (50 / 60Hz)

Patented optical module which controls power and provides prescriptions at 0.01D.

Continuous and simultaneous changes of sphere, cylinder and axis to improve efficiency and accuracy.

Silent and instant lens changes.

Smart tests and unique algorithms.

Smooth power changes and wider field of vision to make the procedure shorter and the refraction more comfortable.

Customizable tests and programs.

Possibility of comparing refraction in customized and immersive real life scenario.

Compare multiple data such as lensmeter and auto refractor with one click.



Phoropter head



Chart screen



Console

APH 550

PHOROPTER



High-end automatic phoropter for speed precision and comfort

MPH 150

PHOROPTER



An efficient solution for your refraction room

The availability of the product will vary depending on the market.

Highly-intuitive, easy-to-use touch screen control.

Customizable test sequences.

Easy data transfer from lensmeter to streamline exam.

Compare prescriptions in 2 clicks to speed final verification.

Quiet and high speed rotation disk for optimal patient comfort.

Extensive range of lenses and filters to guarantee quality refractions in far and near vision.

Tilt mechanism allowing easy optical axes convergence for near vision exam.

Flexible and qualitative mechanical design.

Rapid advance of lenses through a simple knob with automatic driving of the discs.

-28.75D to +27.25D	Sphere	-28.75D to +27.25D
+6.00D	Cylinder	-6.00D
0° to 180°	Axis	0° to 180°
0 to 20	Prism	0 to 20
48mm to 80mm	Pupillary distance	50mm to 70mm
±0.25 / ±0.50	Cross cylinder	±0.25
30cm to 70cm	Near charts range	40cm to 67cm
12mm, 13.75mm, 16mm, 18mm	Vertex distance	11.5mm, 13.75mm, 15.75mm, 17.75mm
<ul style="list-style-type: none"> - Red filter - Green filter - Linear polarized filter (45° / 135°) - White & red maddox - Skiascopy glass - Cross cylinder ±0.50 - Pinhole - Occluder 	Auxtens	<ul style="list-style-type: none"> - Red filter - Green filter - Linear polarized filter (45° / 135°) - White & red maddox - Skiascopy glass - Cross cylinder ±0.50 - Pinhole - Occluder
Total	Convergence	Total
Controller keyboard	Control system	-
10"	Screen size	-
Yes	Touch screen	-
Yes	Tilttable screen	-
11	Key number	-
Wired	Wired / not wired	-
-	WFI / BT	-
Yes	Connectivity	-
Integrated to the keyboard	Printer integrated	-

AKR 800

AUTO KERATO-REFRACTOMETER

Automatic and easy AKR to enhance your daily practice



Refraction measurement	Sphere (refraction)	-30D to +22D (step: 0.01/0.12/0.25D)
	Cylinder	0D to ±10D (step: 0.01/0.12/0.25D)
	Axis	0° to 180° (step: 5°/1° unit)
	Min pupil diameter	Ø 2.0mm
	Vertex distance	0, 10, 12, 13.5, 15mm
	Light environment	Photopic, Mesopic, Scotopic
	Auto tracking	3D Auto (X-Y-Z directions) or manual
	Auto shot	Available
	Auto transition from right to left eye	Available
	Keratometry measurement	Corneal curvature radius
Corneal refractivity		33.75 to 67.5D (step: 0.12/0.25D)
Degree of corneal astigmatism		0 to ±10D (step: 0.12/0.25D)
Axis Angle		1 to 180° (step: 5°/1°)
Peripheral measurement		Ø7.0mm
Other measurement	Pupillary distance	0mm to 85mm (step: 1mm)
	Pupil diameter	Ø2.0mm ~ 8.5mm (step: 0.1mm)
	Corneal measurement	Ø12mm – (diagonal measurement: Ø14mm (step: 0.1mm))
Hardware specifications	Screen	10.4 inches color LCD monitor (TFT) 180° rotatable, 40° tiltable
	Chinrest	Motorized
	Printer	Thermal line printer with auto-cutter
	Data output	LAN, USB-A, RS-232C
	Dimensions & weight	271(W) x 464(D) x 482-523(H)mm – 22kg
	Power source	100-240V AC, 50/60Hz, 90VA

The AKR 800 autokerato-refractometer conducts precise and reliable objective refraction and keratometry.

Deliver precise & reliable objective refraction

Enhance your daily practice with great user convenience

Assess night vision and fit contact lens



AKR 550

AUTO KERATO-REFRACTOMETER

Advanced refractive measurement with quick and simple operation



AKR 300

AUTO KERATO-REFRACTOMETER

Convenient and easy-to-use objective refraction

High-accuracy measurement on even small pupils.

Guided alignment that automatically starts measurement when pupil is focused.

Pupil size measurement in scotopic and photopic light conditions.

Screen tilts and swivels for comfort when seated or standing.

Automatic data transfer to APH 550.

Integrated periphery keratometry measurement for contact lens fitting.

Cornea, pupil & hard contact lens diameter easy measurement.

Measurement Protocol Customization.

Instant access & display of last 10 measurements stored in memory.

Assistant measurement function.

Unique technology: « Live mode » to assist ECP's measurement.

Refraction measurement	-30D to +22D	Sphere (refraction)	-25D to +22D
	0D to ±10D	Cylinder	0D to ±10D
Keratometry measurement	0° to 180°	Axis	0° to 180°
	5mm to 10mm	Curvature radius (Keratometry)	5mm to 10.2mm
	33.75D to 67.5D	Corneal refraction	33D to 67.5D
	0D to ±10D	Cylinder	0D to ±15D
	0° to 180°	Axis	0° to 180°
	-	Peripheral keratometry	Yes
	-	Eccentricity	Yes
	0, 10, 12, 13.5, 15mm	Vertex distance	0, 10, 12, 13.5, 15mm
	2mm	Minimum pupillary diameter	3mm
	2mm to 8.5mm (pupil only – auto)	Pupil diameter measurement	2mm to 8.5mm
10mm to 85mm	PD measurement	10mm to 88mm	
5.7" (40° tilt, 30° pivot)	Screen size	5.7" (40° tilt)	
-	Touch screen	Yes	
Manual	Chinrest	Motorized	
-	Auto-focus	Yes	
Yes	Auto-shooting	Yes	
Integrated	Printer	Integrated	
RS-232C	Connectivity	RS-232C	
430 (H) x 422 (D) x 240 (W) mm	Dimensions	450 (H) x 500 (D) x 260 (W) mm	
13kg	Weight	20kg	
230V AC	Power supply	230V AC	

The availability of the product will vary depending on the market.

TRK-2P

AUTO KERATO-REFRACTO-TONOMETER

The TRK-2P combines a refractometer, keratometer, non-contact tonometer and pachymeter in one compact instrument.



The TRK-2P features a fully auto alignment system with auto measurement function. The compact size and 8.5 inch rotating color touchscreen control panel offers total flexibility for the operator and also instrument location.

Cataract mode

The TRK-2P has a built-in function that allows the measurement of patients who have cataract or opacity. This function works automatically or manually.

Soft air puff

Improved nozzle design controls the optimal amount of air required for every IOP measurement. A softer air puff improves patient comfort and results in an improved measurement experience.

Adjusted intraocular pressure (IOP)

The pachymeter function can be used to adjust the measured IOP value depending on the cornea thickness. The integrated formula for IOP adjustment can be customized by the eye care practitioner.

REF Measurement	Specification
Measuring range	Spherical refractive power: -30D to $\pm 25D$ (0.12/0.25D steps)*
Minimum measurable pupil diameter	\varnothing 2.00 mm
PD measurement range	20 to 85mm (1mm step)
Target fixation	Auto fog system
KRT Measurement	
Measuring range	Corneal curvature radius: 5.00mm to 13.00mm (0.01mm step). Corneal refractive power: 67.5D to 25.9612D (0.12/0.25D steps) (where corneal refractive power = 1.3375D) Corneal astigmatic power: 0D to $\pm 12D$ (0.12D/0.25D steps). Direction of corneal astigmatic axis: 0° to 180° (1°/5° steps).
Ocular Pressure Measurement	
Measuring range	1 to 60mmHg (1mmHG step)
Corneal Thickness Measurement	
Measuring range	0.400mm to 0.750mm (0.001mm step)
Others	
Chinrest travel distance	Up/down: 67mm
Other Specification	
Dimensions	293-396mm(W) x 505-601mm(D) x 470-682mm(H)
Weight	22.0kg
Power Supply	100-240V AC, 50-60Hz, 100VA

* -30D \leq spherical refractive power + cylindrical refractive power or spherical refractive power + cylindrical refractive power \leq +25D

The availability of the product will vary depending on the market

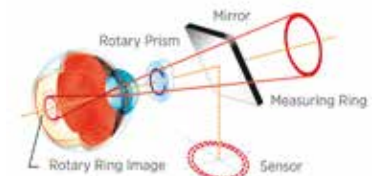
4 in 1: refraction, keratometry, tonometry & pachymetry

Fully automatic

Soft air puff

Rotary Prism

With just one touch of the fingertip on the control panel the Topcon TRK-2P will measure both eyes accurately due to Topcon's exclusive Rotary Prism Technology™.



ALM 800

LENSMETER

Unique combination of the latest Lensmeter Technologies



The new generation of lensmeter measures both harmful and beneficial blue light transmission and an easy lens measurements. The exclusive design of the marking system enables blocking and marking in one single operation.

Measuring range	
Sphere	0.0D to $\pm 25D$ – (0.01 / 0.12 / 0.25)
Cylinder	0.0D to $\pm 10.0D$
Axis	1° to 180°
Addition	0.0D to 10.0D – (0.01 / 0.12 / 0.25)
Prism	0.0 Δ to 10.0 Δ – (0.01 / 0.12 / 0.25)
Wavelength	525nm
Type of measurement	
Lenses / frames	Unifocals, multifocals, progressives
Tints	Up to class 4 (>5%)
Contact lenses	Soft and hard (dedicated support)
Measurement of UV transmission	0% to 100% (-25D to +25D)
Wavelength	375nm (UV-A)
Inter-pupillary distance	45mm to 85mm (0.5mm)
Screen	LCD Color 5.7"
Integrated printer	Yes
Connection	RS 232 C
Dimensions	170 (L) x 205 (W) x 468 (H) mm
Weight	4.7kg
Power supply	100V to 240V – 50/60Hz – 40V VA

Measurement technology using the green light beam.

Lens support adapted to all lenses and frames curves.

Guided and automated prism marking.

Measurement of UV transmission.

Measurement of inter-pupillary distance.

Ergonomic design with tilting color screen.

Data transfer to automatic phoropter or Patient.

Management Software (PMS).

Printer.

UNIQUE QUANTIFICATION & DISPLAY OF BLUE LIGHT

- Exclusive 3 leds system, with 2 leds dedicated to blue light, measuring:
 - the transmission of beneficial circadian blue light
 - the percentage of both the harmful blue light and UV blocked





ALM 700 LENSMETER

Intuitive and practical lensmeter for rapid and accurate measurement

Measurement technology using the green light beam.

Lens support adapted to all lenses and frames curves.

Measurement of UV transmission.

Measurement of inter-pupillary distance.

Ergonomic design with tilting color screen.

Data transfer to automatic phoropter.



ALM 500 LENSMETER

Measurement of all types of lenses and frames

Measurement technology using the green light beam.

Lens support adapted to all lens and frames cambers.

Ergonomic design with tilting color screen.

Built-in printer.

Data transfer to automatic phoropter.

Measuring range		
0.0D to ±25D – (0.01 / 0.12 / 0.25)	Sphere	0.0D to ±25D – (0.01 / 0.12 / 0.25)
0.0D to ±10.0D	Cylinder	0.0D to ±10.0D
1° to 180°	Axis	0° to 180°
0.0D to 10.0D – (0.01 / 0.12 / 0.25)	Addition	0.0D to 10.0D – (0.01 / 0.12 / 0.25)
0.0Δ to 10.0Δ – (0.01 / 0.12 / 0.25)	Prism	0.0Δ to 10.0Δ – (0.01 / 0.12 / 0.25)
525nm	Wavelength	525nm
Type of Measurement		
Unifocals, multifocals, progressives	Lenses/frames	Unifocals, multifocals, progressives
Up to class 4 (>5%)	Tints	Up to class 4 (>5%)
Soft and hard (dedicated support)	Contact lenses	Soft and hard (dedicated support)
0 to 100% (-25D to + 25D)	Measurement of UV transmission	-
375nm (UV-A)	Wavelength	-
45mm to 85mm (0.5mm)	Inter-pupillary Distance	-
LCD Color 5.7"	Screen	LCD Color 5.7"
Yes	Integrated printer	Yes
RS 232 C	Connection	RS 232 C
170 (L) x 205 (W) x 468 (H) mm	Dimensions	170 (L) x 205 (W) x 468 (H) mm
4.3kg	Weight	4.3kg
100 to 240V – 50/60Hz – 40V VA	Power supply	100V to 240V – 50/60Hz – 40V VA

CS POLA 600

TEST PROJECTOR AND SCREEN

Wide choice of ETDRS optotypes with many polarized tests



Technology	16/9, LCD
Screen size	24"
Resolution	1920 x 1080 pixels
Contrast	From 100% to 1.5%
Luminosity (brightness)	300cd/m2
Projection distance	From 1.5m to 8m
Test number	100
Polarisation	Yes (linear and circular)
Optotypes	Landolt C, numbers, letters, ETDRS
Masks and tests	<ul style="list-style-type: none"> - Astigmatism - Jackson cross - Cross cylinder - Lines (horizontal / vertical) - Duochrome test - Binocular vision - Fixation point - Aniseiconia - Stereoscopia - Phories - Color vision - Amsler grid - Red / green - Worth test
Connectivity	APH 550, Vision-R 800
Remote control	Yes
Dimensions	621 (L) x 468 (W) x 76 (H) mm
Weight	9kg



24" polarized LCD display.



Projection distance: 2M to 8M.



Customizable slideshow.



Wireless connection.



CS 550

A SCREEN TO EASILY MEASURE VISUAL ACUITY

Test projector and screens



CP 550

TEST PROJECTOR AND SCREEN

A must for LED Technology

- Over 100 kinds of charts.
- High definition screen.
- Red and green charts.
- Wireless connection.

- 50 charts.
- Fast, quiet disk rotation.
- Long lasting LED light illumination.
- Projection distance: 2m to 7m.

4/3, LCD	Technology	4/3, LED Lamp
19"	Screen size	16" (to 5m)
1280 x 1024 pixels	Resolution	Not applicable (projector technology)
From 100% to 1.5%	Contrast	-
320cd/m2	Luminosity (brightness)	200cd/m2 (to 5m)
From 1.5m to 6m	Projection distance	From 2m to 7m
100	Test number	50
-	Polarization	Yes (linear)
Landolt C, numbers, letters, Snellen, Children's drawing	Optotypes	Landolt C, numbers, letters, Snellen, Children's drawing
- Astigmatism - Binocular vision - Coincidence - Aniseiconia - Red / Green - Heterophoria - Stereoscopy	Masks and tests	- Lines (horizontal/vertical) - Astigmatism - Cross cylinder - Jackson cross - Worth 4 dots - Binocular balance - Duochrome - Coincidence - Shober - Phories - Stereoscopy - Fixation point - Eye schematic
APH 550	Connectivity	APH 550
Yes	Remote control	Yes
436 (L) x 362 (W) x 60 (H) mm	Dimensions	248 (L) x 234 (W) x 336 (H) mm
5.5kg	Weight	4.5kg



2

MEASUREMENTS

VISIONOFFICE³ By ACTIVISU

PERSONALISED MEASUREMENTS

Go a step further in lens personalisation with H3D

With its latest pure and elegant design coupled with new features, Visiooffice[®] 3 offers the high precision of the Visiooffice range. It contributes towards creating a memorable patient experience and imposes itself as an indispensable tool for the sale of precise, accurate and personalised lenses.



Top 3 benefits for your practice

- Personalised measurements
- Interactive sales tool
- Precision & accuracy



Frame choice highlight the in-store selection

- Automatic detection of the patient's face
- Fluid navigation of the interface
- Compare different photos



Illustration of the wearer's benefits

Accentuate the value of personalised lenses



Eyecode™ measurements lens personalisation

- Pupillary distances in far vision
- Fitting heights in far vision
- ERC and ELD
- Pantoscopic tilt and wrap angle
- Dominant eye
- Reading distance
- Near Vision Behaviour compatible



Lens and treatment options visual and realistic demonstrations

Go a step further in lens personalisation with the H3D options. The exclusive and patented H3D protocol carries out a study of the client's natural posture to ensure an optimal visual comfort. The analysed posture is automatically taken into account in the measurements by Visiooffice[®] 3's algorithms.



WAM 800

WAVEFRONT ABERROMETER

Boost your patients' experience in practice

WAM™ 800 is a very intuitive, rapid and fully-automatic aberrometer that combines several technologies. This enables the eye care professional to provide a comprehensive screening of the eye in less than two minutes.



Top 3 benefits for your practice

- Fully automatic
- Fast eye screening
- Intuitive user interface

Improved tonometry using fixation point and IOP value, automatically corrected according to the corneal thickness.

Placido rings topography to help analyse over 100,000 points of cornea and provide the keratoconus probability index.

Using infrared retro-illumination, WAM 800 provides a detailed view of the crystal lens opacity, helpful in identifying cataracts.

Individual autorefractometer and pupil measurement for mesopic, photopic conditions and near vision

Real time evaluation of the patient's eye fatigue when focusing on nearby objects

Topography and pupilometry for contact lens fitting and keratoconus detection

The Wave Analyser can show the difference of a patient's day and night vision. In practice you scientifically highlight this sensitivity with different functions

The Wave Analyser can show the difference of a patient's day and night vision. In practice you scientifically highlight this sensitivity with different functions

VISION-R™ 800

SUBJECTIVE REFRACTION

Refraction providing unique patient experience



The Vision-R 800 is an automated, accurate phoropter, complete with unique SMART algorithms to assist you during the procedure.

A more comfortable experience for the patient...

Smooth power changes and wider field of vision make refraction very comfortable for the patients. The procedure is shorter and no fatigue is experienced. Answers are easier to give during the refraction procedure. At the end, the Vision-R 800 phoropter offers the opportunity to compare refractions in a customised and immersive real-life scenario. A fascinating experience for the patients!

...for complete confidence.

A more accurate phoropter...

Vision-R 800's exclusive optical module controls powers at 0.01D and delivers continuous and instantaneous changes of sphere, cylinder and axis, at the same time. Refraction is made more accurate, but prescriptions can also be made in 0.5 D steps. Patients can now get the full potential of their vision!

...for a more precise refraction.

An easier procedure for the practitioner...

Thanks to its continuous and simultaneous changes of the sphere power, cylinder axis and cylinder power, Vision-R 800 phoropter generates a more precise refraction end point to 0.01D, compared to traditional refraction methods. In addition, "Smart Tests" and their unique algorithms assist the practitioner in conducting the whole refraction procedure. Refraction is made both very easy and very accurate!

...for a fully reliable prescription.

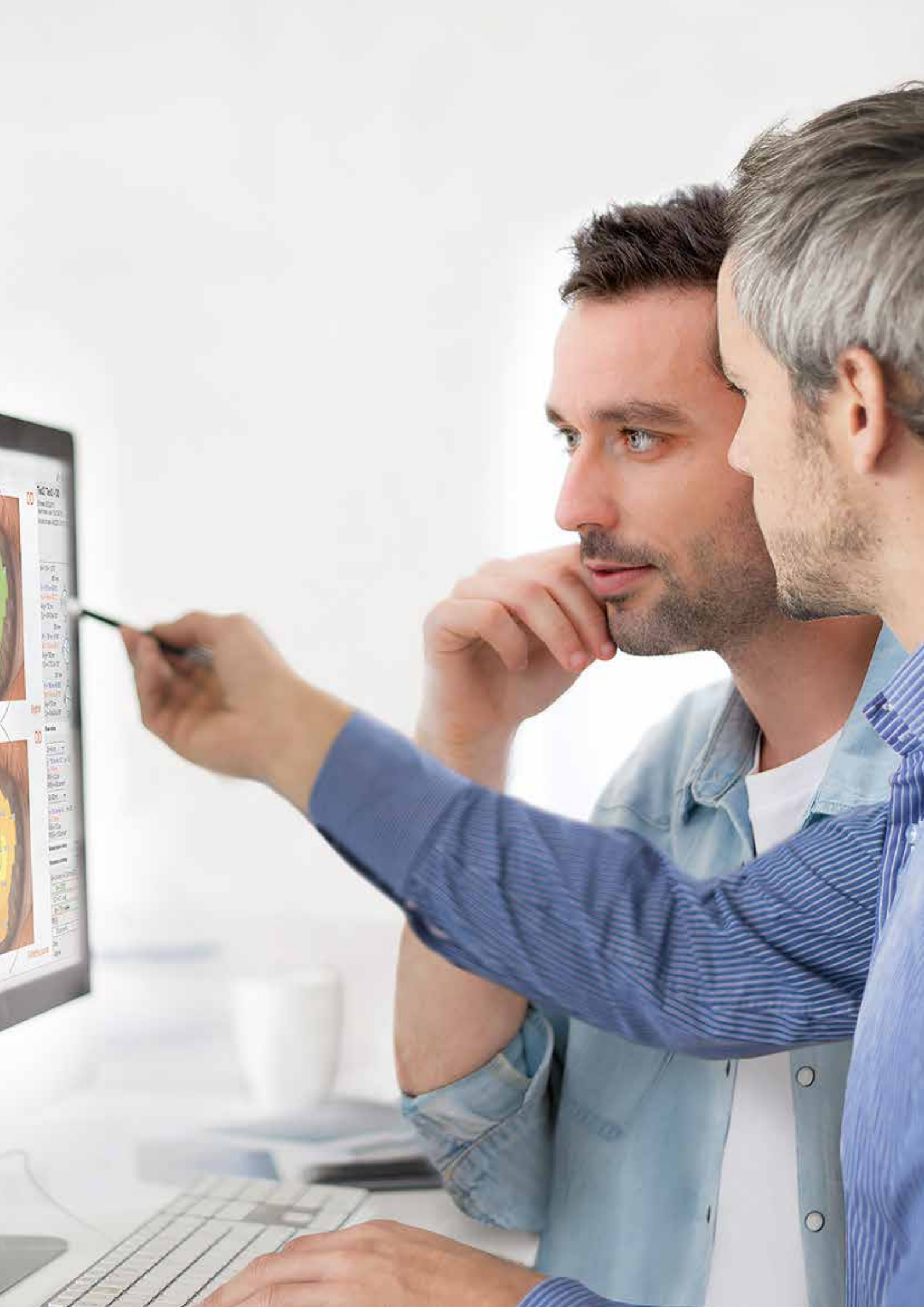
Top 3 benefits for your practice

- Excellent patient experience
- Automated phoropter
- More accurate than ever before



AVA
AN ESSILOR INNOVATION

AVAILABLE WITH ESSILOR AVA LENSES



3

.....
EYE HEALTH



DRY EYE MANAGEMENT SYSTEM

Integrated system for the analysis of the ocular surface



Dry eye is the most common ocular condition encountered in ophthalmic practice. IDRA is designed to perform tear film tests, from the quality of tears to the analysis of the Meibomian glands.

Image resolution	5MP
Acquisition mode	Multi shot, video
Focus	Autofocus, manual focus
ISO management	Variable
Cones	Main cone and Placid cone
Camera	Coloured, sensitive to infrared (NIR), yellow-filtered
Light source	Infrared LED – Blue, red and white LED

Functions

The SBM Device is the new instrument for the individual analysis of tear film that allows a quick detailed structural research of the tear composition.

Research on all the layers (Lipid, Aqueous, Mucin) and Meibomian glands.

Thanks to the SBM Device it is possible to identify the type of Dry Eye Disease (DED) and determine which components can be treated with a specific treatment, in relation to the type of deficiency.

Top 3 benefits for your practice

- Offer expertise and diagnostics of dry eye syndrome
- Attract more patients
- Positive patient experience

Auto interferometry

Tear meniscus

Nibut with map and graph

Meibography (3D)

Blink quality

Blepharitis

Ocular redness classification

Pupillometry

White to white measurement

Anterior segment imaging

activa

EYE MASK

Innovative eye mask with heating and automatic squeezing technology

This innovative eye-mask provides a complete heating and automatic squeezing technology in a fast and painless single device. Effective on meibomian glands dysfunction associated with tear film evaporation. After each use the mask can be easily sanitized and does not require any gel during treatment as many other devices do.

The service provided will offer better comfort in daily life for lens wearers, stressed eyes caused by heavy use of digital screens will become fitter with each eye service application. Effective on Meibomian glands dysfunction associated with tear film evaporation.

- Unclog glands
- Melting the meibom
- Restore natural meibom flow
- Better pathology management
- Increase glands functionality



Improve your slit lamp

A dedicated platform for dry eye diagnosis, provides complete dry eye tests according to the recommendation of TFOS DEWS II report. Can be mounted on the majority of slit lamps.

- DSLC200 is the new Slit Lamp imaging system. Thanks to its high optical quality it provides amazing images and videos. The 3.1 MP camera with 1/1.8" sensor and high-quality optical image splitter offer incredible results.
- Switch your Slit Lamp into a complete dry eye assessment test. The new DEM 100 fitting on any Slit Lamp allows a complete Tear Film automated digital analysis.
- The DSLC200 device can also be used in combination with the DEM 100 and is adaptable to your Slit Lamp System. The devices can be installed in less than 5 minutes on your Slit Lamp and transform it into a complete and unique diagnostic tool for dry eye.



How does it work?

Touch screen controlled, user-friendly and easy to manage. Through a fully automated procedure the device is able to melt the meibum inside the glands at 43°C and simultaneously squeeze them. This way releasing the melted oil and allowing a strong improvement of the lipid layer quality. The complete procedure takes only 15 minutes.



DEM100



DSL200



DRY EYE SOLUTION

Dry eye syndrome solution using intense regulated pulse light technology

Dry eye syndrome is commonly caused by insufficient tears or excessive evaporation. A large majority of cases are due to evaporation caused by insufficiency of the external lipid layer of the lacrimal film secreted by the Meibomian glands. An increase in screen usage, artificial lighting, air pollution and other elements from our modern lifestyle can make dry eye symptoms an ever increasing nuisance.

The treatment

E-Eye generates sculpted, regulated train pulses. The energy, spectrum and time are precisely set to stimulate the meibomian glands in order for them to return to a normal function.

Protective eyewear is placed over the patient's eyes and optical gel is applied on the cheek and temporal area. A series of five flashes is applied under one eye and then repeated under the other. Sessions only take a few minutes with instant improvements.

For optimal results, it is recommended to run a full series of treatments:

- Day 0
- Day 15
- Day 45
- Day 75 (optional)

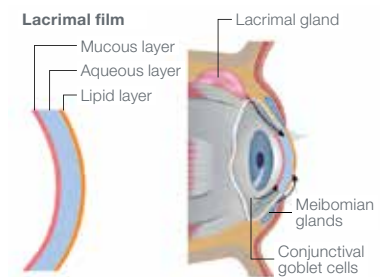


Top 3 benefits for your practice

- Offer expertise and solutions for dry eye syndrome
- Attract more patients and generate additional revenue stream
- Increased patient satisfaction

The lacrimal film, necessary to the eye function, is made of three layers:

- The mucous layer, in contact with the ocular globe, secreted by the conjunctival mucous cells
- The aqueous layer, secreted by the lacrimal gland
- The lipid layer, secreted by meibomian glands



TEARSTIM

DRY EYE SOLUTION

Dry eye syndrome solution using intense regulated pulse light technology



Dry eye syndrome is commonly caused by insufficient tears or excessive evaporation. A large majority of cases are due to evaporation caused by insufficiency of the external lipid layer of the lacrimal film secreted by the Meibomian glands. An increase in screen usage, artificial lighting, air pollution and other elements from our modern lifestyle can make dry eye symptoms an ever increasing nuisance.

How TearStim works?

The procedure only takes a few minutes, giving you the chance to go the extra mile to help maintain your patients' eye health. With the patient sitting comfortably in a chair, the optician simply covers the patients' eyes with protector shells and applies a special gel.

A series of 8-10 light pulses is then aimed at the region below the eyes, before being repeated in the same way on the other eye.

The solution needs only three sessions to make a difference:

- Day 0
- Day 15
- Day 45
- Day 75 (optional)

Analysis with tearcheck®

- 9 exams in less than 10 minutes
- Fully automatic imaging
- Unique usability
- Wireless data export & print
- PC inside
- Plug & Play
- High-end technology
- 2 patented examinations

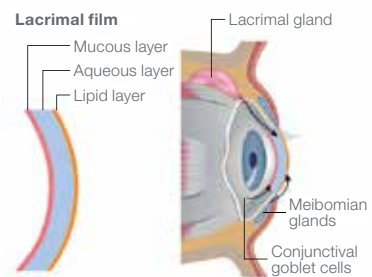


Top 3 benefits for your practice

- Offer expertise and solutions for dry eye syndrome
- Attract more patients and generate additional revenue stream
- Increased patient satisfaction

The lacrimal film, necessary to the eye function, is made of three layers:

- The mucous layer, in contact with the ocular globe, secreted by the conjunctival mucous cells
- The aqueous layer, secreted by the lacrimal gland
- The lipid layer, secreted by meibomian glands



EXPERT MYOPIA CARE

BECOME A REFERENCE IN MYOPIA CARE. NATURALLY.

Naturally scale your expertise in myopia care



Expert Myopia Care is composed of Myopia Expert™ 700 and its digital solution Essibox® Myopia Care, offering you a highly accurate and turnkey resource that enables proactive myopia management.

A fast and accurate solution for measuring axial length and corneal topography

The Myopia Expert 700 is a corneal analyser with an integrated pupillographer and optical biometer.

- Measurement of Eye Axial Length
- Corneal topography
- Fluorescence imaging for contact lens fitting
- Pupil measurements
- Storage and overviews of historic ocular data properties for easy observation of changes over time.

Measurement specifications	
Function	Features
Axial length	Low coherence interferometry
Corneal topography and keratometry	Keratoscopic cone: 24 rings equally distributed on a 43D sphere
	Analyzed points: Over 100,000
	Measured points: Over 6,000
	Corneal coverage: Up to 9.8 mm on a sphere of radius 8mm (42.2 diopters with n = 1.3375)
Focus system: Guided focus	
Pupillometry	Infrared LEDs + white LEDs for photopic pupil acquisition
Fluorescein	Blue LEDs with barrier yellow filter
Measurement range and accuracy	
Measurement	Measuring range
Keratometry	Curve radius: 5.00 – 12.00 mm
	Curve Radius in Diopter (D)(n=1.3375): 28.00 – 67.50 D
Axial length	15.00 – 36.00 mm
Pupil dimension	0.50 – 10.00 mm
Limbus (white-to-white)	8.00 – 14.00 mm
Electrical specifications	
Power supply	AC 100-240V 50/60 Hz
Power consumption	100 VA
Fuse	Type: 20 x 5 mm
	Value: T 2.5 A L 250 V anti-surge
Mechanical specifications	
Width	320 mm
Height	490 mm
Length	470 mm
Weight	18 kg
All-in-one instrument	
PC on board	Integrated PC with complete software and patient database
Touch screen	Integrated monitor with capacitive touchscreen display
Motorized chinrest	Integrated motorized chinrest completely managed by the software

Top 3 benefits for your practice

- Offer myopia management
- Attract new patients
- Build patient loyalty

Naturally scale your expertise in myopia care
Essilor Instruments brings a scalable and professional protocol to your practice for effective and proactive myopia management, from the early detection to long term monitoring.

Build this expertise on an easy to adopt solution
Myopia care made easy for you. All the expertise at your fingertips.

Share your expertise to create long term customer relationships
Engage your patients in the long term, using Expert Myopia Care to explain clinical results in a meaningful way.



OCT

OPTICAL COHERENCE TOMOGRAPHY (OCT)

A fully automated OCT with true color fundus camera & angiography**



Observation & photography of fundus image

Scan mode	Color, red-free & IR
Picture angle	45° ±5% 30° or equivalent (digital zoom)
Operating distance	34.8mm (in fundus photography)
Photographable diameter of pupil	Normal pupil diameter: ø 4.0mm or more Small pupil diameter: ø 3.3mm or more

Observation & photographing of the fundus/tomogram

Scan mode	(on fundus) Horizontal direction 3-12mm Vertical direction 3-9mm
Scan pattern	3D scan (horizontal/vertical) Linear scan (line-scan/cross-scan/radial-scan)
Scan speed	50.000 A-Scans per second
Lateral resolution	20µm or less
In-depth Resolution	6µm or less
Photographable diameter of pupil	ø 2.5mm or more
Internal fixation target	Dot matrix type organic

Electric rating

Source voltage	AC 100-240V
Power input	70-150VA
Frequency	50Hz-60Hz

Dimensions and weight

Dimensions	543-680 (L) x 340-480 (W) x 530-735 (H) mm
Power Input	25kg

Observation & photographing of anterior segment

Photography type	Color & IR
Operating distance	62.6mm ±0.1mm (when taking a picture of anterior segment)

Observation & photographing of the anterior segment tomogram

Scan range (on cornea)	Horizontal direction 3-6mm ±5% Vertical direction 3-6mm ±5%
Scan pattern	Linear scan (line-scan/radial-scan)
Fixation target	External fixation target



Easy to use & fully automatic OCT allowing optimal patient positioning without operator action for effective & fast screening.



Integrated live fundus imaging and maximize OD/optometrist time by locating region of interest exact position for an OCT-scan.



Efficient glaucoma screening with 3D wide scan (12mm x 9mm) allowing to screen fovea & optic nerve in a single scan reducing numbers of scan.



Automated angiography & Anterior chamber (ICA, cornea thickness) analysis.**



The availability of the product will vary depending on the market.

* Limited geographical coverage

** Angiography module priced as an additional option

RETINA 800

FUNDUS CAMERA

Streamline retinal screening in your practice



Automatization	Fully automatic
Minimum pupil size	2.5
Field of view	45° up to 90°
Internal fixation points	7
Resolution	5MP (2448x2051)
Built in software	Yes
Cup to disk ratio	Yes
MOSAIC function	Yes
Light source	LED
Connectivity	Teleconsultation available with retina800.essilor.com
Dimensions	43 (L) x 34 (W) x 46 (H) cm
Weight	13kg
Printer integrated	-



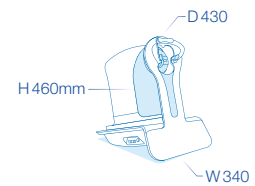
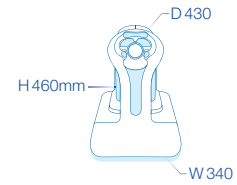
Next generation automatic fundus camera
 Innovative and unique optical design allows fast and high quality image capture with minimal operator training.



Optimized workflow with friendly user interface
 Helping Eye Care Professionals easily screen patients and open doors to remote diagnostic or digitally assisted evaluation.



Designed for remote diagnostic and teleconsultation.



CORNEA 550

CORNEAL TOPOGRAPHER

Precise diagnosis and effortless contact lens fitting



Light source	White and blue Light (470nm) Corneal topography and video keratometry Infrared LED Pupillography and melbography
Measurement points	6144
Working distance	78mm
Digital camera	Colors, high definition (1024 x 960px)
Analysis	<ul style="list-style-type: none"> - Graphical representation for an accurate evaluation of the anterior surface of the cornea - Dynamic and static measurement of pupil diameter in scotopic, photopic and mesopic vision - Evaluation of tear film breakthrough time - Real-time observation of tear film stability under blue and white light - Evaluation and classification of the degree of atrophy of the melbomian glands
Connectivity	ANA EYES USB 3.0 – with the software
Dimensions	320 (L) x 205(W) x 510 (H) mm
Weight	6kg
Source voltage	230V AC



Streamlined contact lens fitting process

Precise evaluation of the corneal surface and wide variety of graphic presentations.

Rapid and easy selection of the best lens thanks to fluorescent image simulation and integrated database which includes lenses from 27 brands.

Dynamic and static capture of the pupil reaction according to light conditions (scotopic, photopic, mesopic).

Advanced tear film analysis for dry eye

Blue and white light image capture allowing real-time observation of the tear film clearance.

Non-invasive measurement of the tear film break-up time (pictures and videos).

Meibography with color scale enabling evaluation of gland loss.



MEDMONT MERIDIA™

ADVANCED TOPOGRAPHER

One system. Many choices.



The Medmont Meridia™ Advanced Topographer is designed to improve patient outcomes and grow your practice with NEW multi-purpose clinical evaluation options to fit your needs. This system platform is available as a choice of two models – Classic and Professional.

Built from the proprietary concepts of the E300, the Classic model offers the same proven best-in-class topography, enhanced with a larger color field-of-view and ergonomic quick keys for navigating the software. The Professional model extends the features of the Classic with anterior, fluorescein, and meibomian gland imaging and videos. The Professional model also features a choice of proven dry eye grading scales and insightful reports. This evidence-based approach with collaborative views and insightful patient reports facilitates patient communication and engagement.

Key new features	Medmont Meridia™ Professional	Medmont Meridia™ Classic
Increased field of view topography	✓	✓
Optimized depth of field focus	✓	✓
High resolution digital color imaging	✓	✓
Horizontal visible iris detection	✓	✓
Scleral lens simulation	✓	✓
Medmont studio 7 improved user experience	✓	✓
Ergonomic quick keys on instrument	✓	✓
Convenient and secure calibration ball storage	✓	✓
Enhanced and quicker interface connections	✓	✓
Anterior imaging and video	✓	
Meibomian gland imaging	✓	
Fluorescein imaging and video	✓	
Tear meniscus height measurements	✓	
Scotopic and photopic pupil measurements	✓	
Focus guidance aid	✓	
Proven imaging grading scales (EFRON, BHVI, Meiboscale)	✓	
Dry eye patient screening reports	✓	

MEDMONT M700

AUTOMATED PERIMETER

The Medmont M700 Automated Perimeter offers practitioners an effective tool for assessing visual fields. With the advent of Fast Thresholding capabilities to improve patient comfort, perimetry is now more efficient for monitoring and assessment of disease.



Patient Reliability Indicators

- False Positives
- False Negatives
- Fixation Losses
- Video Fixation Eye Tracking Monitor
- Automatic Fixation Tracking

Field Analysis Tools

- Glaucoma Progression
- Pattern Defect Index (PD)
- Overall Defect Index (OD)
- Cluster Analysis (Glaucoma) Index
- Regression Analysis Over Entire Field or Localised Areas
- Baseline Analysis

Display Options

- Grey Scale
- Numeric Decibel Data
- Patient Hill of Vision Deviation (Localised Defect Identification)
- Age Normal Deviation (General Depression Identification)
- Severity of Loss Indicators (Relative Probability of Loss)

Result Outputs

- Customizable Page Layout
- Single Result Per Page
- Left Eye/Right Eye On One Page
- Difference Maps
- Multiprint with 5 Results Per Page (Extendable)
- Regression graphs printing: Pattern Defect Index, Overall Defect Index, Data Histograms, OP, 3D Display

Microsoft Windows™ Based Software

- Multiple Workstations Connected to Central Database
- EMR/EHR Interface
- USB Computer Interface
- DICOM Interface

No Regular Professional Servicing and Maintenance Requirements.

Rapid Testing Times

Full Field Coverage (160°)

Advanced Fast Threshold Testing Strategy,
Employing Bayesian Testing Techniques

Flicker Test Facility, With Proven Early Field
Loss Detection Capabilities



ES 800

REVEAL
YOUR
CREATIVITY

 **ESSILOR**
INSTRUMENTS

 **ESSILOR**
INSTRUMENTS

4

.....
FINISHING

DELTA

DELTA SERIES

The compact all-in-one edger



DELTA is a concentrate of technology for an optimal cost effective solution. Easy to use and intuitive it will raise your productivity. Delta is also a excellent solution to complete your offer and provide a fast delivery service to your customers.

	DELTA 200	DELTA 300
	Chamfering	Drilling tilt 0-15° Chamfering
	Grooving	Grooving
DELTA 100	Polishing	Polishing
	Flat edge finish	Flat edge finish
	Bevel	Bevel

Full parallel tasking

- Tracing, centering and blocking in parallel of edging without quality compromise.
- A unique user-friendly display to manage all functions.

Fast and precise optical tracing

- Direct tracing without handling a lens or any accessories.
- Shape recognition whatever the lens position.
- Simultaneous recognition of shape and drilling data.

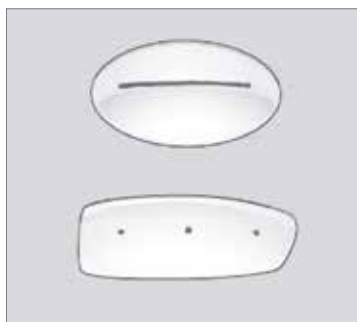
Place and trace 3D technology

- With the curve and frame base.
- Delta footprint is one of the smallest of the market.



Patented ergonomic blocker

- Parallax-free centering (video assistance).
- Natural and smooth flow of movement.
- Delta is the only one product which allows to compensate a deviation that occurs during the blocking without removing the block.



Optical shape tracing

NEKSIA

NEKSIA SERIES

The simple edging solution for the daily workflow



Born in 2014 as the successor of Kappa range, Neksia's success is indisputable. It has been built thanks to a great mix of reliability, workflow efficiency, quality, and productivity. Now available with the high curve function, Neksia has a bright future ahead.

		NEKSIA 500	NEKSIA 550	NEKSIA 600	NEKSIA 650
			High curve bevel	Drilling tilt 0-15°	Drilling tilt 0-15°
	Chamfering	Chamfering	Chamfering	Chamfering	Chamfering
NEKSIA 400	Grooving	Grooving	Grooving	Grooving	Grooving
	Polishing	Polishing	Polishing	Polishing	Polishing
	Flat edge finish	Flat edge finish	Flat edge finish	Flat edge finish	Flat edge finish
	Bevel	Bevel	Bevel	Bevel	Bevel

EASIER WORKING PROCESS

- 8.4-inch user friendly touch-screen.
- Fast-access settings.
- 1,000-job database.

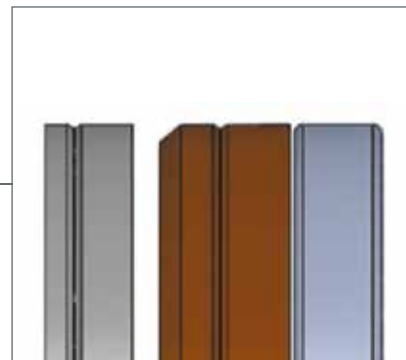
EXPERIENCE WORKFLOW EFFICIENCY

- Fast, easy and extended frame tracing.
- Embedded mechanical tracer
- Smart optical tracing with automatic axis and drill holes recognition.
- Ergonomic environment for a convenient centering.
- Automatic blocking.

ACHIEVE HIGH PERFORMANCE

- Smart processing cycles to guarantee sizing and axis even for the most demanding lenses.
- Patented flexible chamfering wheel.

NEKSIA HIGH CURVE



Specific wheels set for high curve lens

ES™ 800 / ES™ 800M

ES RANGE



Reveal your creativity

The ES™ 800 is a compact and easy-to-use in-store finishing system. It is the perfect solution to demonstrate your craftsmanship, reveal your creativity, and reinforce your expertise while enhancing the value of your work. It incorporates Essilor's state-of-the-art technologies giving it unparalleled edging possibilities. It includes TCB™ 800, the new Automatic TCB (Tracer-Centerer-Blocker)

M'Eye CUSTOM™ WEB APP	ES™ 800 combined with TCB™ 800	ES™ 800 M combined with TCB™ 800
M'Eye Sign™ (Engraving)	✓	✓
M'Eye Shape™ (Creative shape)	✓	✓
M'Eye Cip™ (Chemestrie cip)	✓	✓
M'Eye Diamond™ (Crystal pavé)	✓	✓
M'Eye SportRx™ (Half Jacket)	NA	✓
MASTER YOU EDGING FEATURES		
Myopia Fit Automatic & Manual centering	✓	✓
Advanced optical tracing made for highly complex lens zones and automatic drilling detection	✓	✓
FULL High Curve™. 3D Binocular mechanical tracing	✓	✓
Fit 4 Frame Technology/ 2.0: Aesthetic and robust mountings in all finished	✓	✓
Automatic Centering & Booking with automatic adjustment of the centering data based on the 3-D parameters of the frame	✓	✓
Hydrophobic lens Management	Via Roughing	Via Milling
Fast Roughing Cycle (FRC)	✓	✓
Remote maintenance and software and library update including Embedded OMA shapes	✓	✓
Front side USB stick sict to integrate OMA shapes in local library	✓	✓
Job management	✓	✓
FINISHINGS FEATURES		
Bevel / Flat / Polish / Charmfering	✓	✓
Grooving & Drilling Tilt up to 30°	✓	✓
Mixed Finishing	✓	✓
High Curve bevel up to wrap 30° base 10	✓	✓
Shelf or asymmetric bevel with adjustable height	✓	✓
Mini-bevel	✓	✓
Step bevel	up to 3 mm depth	up to 5.5 mm depth
Back step bevel & inclined back step bevel	✓	✓

Screen size TCB & Edger and position
12" / 12:9 – Multitouch titable top vertical heads up display
Dimensions Edger HxWxD (mm) and weight(kg)
H: 625 – W: 585 – D: 515 – 64kg
Dimensions TCB (Tracer-centerer-blocker) HxWxD (mm) and weight (kg)
H: 597 – W: 306 – D: 515 – 25.9kg
Power consumption & Power supply voltage TCB (Tracer-centerer-blocker)
250W – 240-110V – 60/50Hz 5-3A
Power consumption & Power supply voltage Edger
1350Wz – 220-240V – 60/50Hz 10A 2000Wz – 100-120V – 60/50Hz 12A

ES™ 700 / ES™ 700M

ES RANGE

Master your edging



A compact and user-friendly in-store finishing system, composed of the ES™ 700 edger and TCB™ 800, Automatic Tracer-Centerer-Blocker (TCB). It is the perfect solution to reach precision with ease.

MASTER YOU EDGING FEATURES	ES™ 700 combined with TCB™ 800	ES™ 700 M combined with TCB™ 800	Screen size TCB and position
Myopia Fit Automatic & Manual centering	✓	✓	12" / 16:9 – Multitouch titable top vertical heads up display
Advanced optical tracing mode for highly complex lens zones and automatic drilling hole detection	✓	✓	Screen size Edger and position
FULL High Curve™. 3D binocular mechanical tracing	✓	✓	10" / 16:9 – Multitouch top right display
Fit 4 Frame technology / 2.0: Aesthetic and robust mounting in all finishes	✓	✓	Dimensions Edger HxWxD (mm) and weight (kg)
Automatic Centering & Booking with automatic adjustment of the centering data based on the 3-D parameters of the frame	NA	✓	H: 497 – W: 585 – D: 518 – 63 kg
Hydrophobic lens Management	Via Roughing	Via Milling	Dimensions TCB (Tracer-centerer-blocker) HxWxD (mm) and weight (kg)
Fast Roughing Cycle (FRC)	✓	✓	H: 597 – W: 306 – D: 515 – 25.9 kg
Remote maintenance and software and library update including Embedded OMA shapes	✓	✓	Power consumption & Power supply voltage TCB (Tracer-centerer-blocker)
Front side USB stick slot to integrate OMA shapes in local library	✓	✓	250W – 240-110V – 60/50Hz 5-3A
Job management	✓	✓	Power consumption & Power supply voltage Edger
FINISHINGS FEATURES			1350Wz – 220-240V – 60/50Hz 10A 2000Wz – 100-120V – 60/50Hz 12A
Bevel / Flat / Polish / Charmfering	✓	✓	
Grooving & Drilling Tilt up to 30°	✓	✓	
Mixed Finishing	✓	✓	
High Curve bevel up to wrap 30° base 10	✓	✓	
Shelf or asymmetric bevel with adjustable height	✓	✓	
Mini-bevel	✓	✓	
Step bevel	up to 3 mm depth	up to 3.5 mm depth	
Back step bevel & inclined back step bevel	✓	✓	

PRO-E SERIES

EDGE AHEAD WITHOUT COMPROMISE

Edgers designed to meet high productivity and uncompromising quality

The most compact industrial edger on the market, PROE will be ideal for a workshop handling more than 60 jobs per day. It achieves a high level of productivity especially on the most demanding job without any compromise on the quality.

PROE 600		PROE 700	
			Chemistrie™
			Creative shape
			Engraving
			Half jacket
			Super chamfer
Step bevel		Step bevel	
High curve bevel - Up to wrap 30°, base 9		High curve bevel - Up to wrap 30° Base 9	
Milling		Milling	
All type of mixed jobs		All type of mixed jobs	
Drilling tilt up to 30°		Drilling tilt up to 30°	
Chamfering		Chamfering	
Grooving		Grooving	
Polishing		Polishing	
Flat edge finish		Flat edge finish	
Mini bevel (option)		Mini bevel (option)	
Bevel		Bevel	



Versatility

- All types of mountings and finishing.
- All materials except glass.



Precision

- Top-end edger precision.
- Advanced processes to enable faultless sizing, axis control & aesthetic mountings.



Robustness

- Specific durable tools.
- Easy & fast maintenance processes.



Easy integration

- Compact table top format.
- No need for compressed air.
- Intuitive & user-friendly MMI.
- Large range of configuration.



Productivity

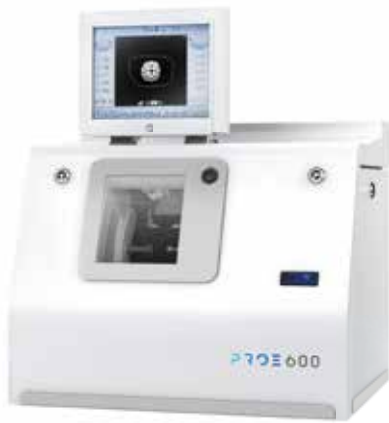
- Productivity gain: up to 50%.¹
- Groove: 3X faster.¹
- Drill 4 holes: 2X faster.¹
- Dry milling to secure hydrophobic lenses as fast as roughing wheels cycles.²
- Start and stop mechanical button and bar code scanner embedded.

¹ Versus standard ECP table top finishing system.

² Versus 2 stars cycle.

PROE 600

PROE 700



Feeler metal pin



Perfect lens thickness measurement with free wear pin

Technician tool case



Ref: M40TB1

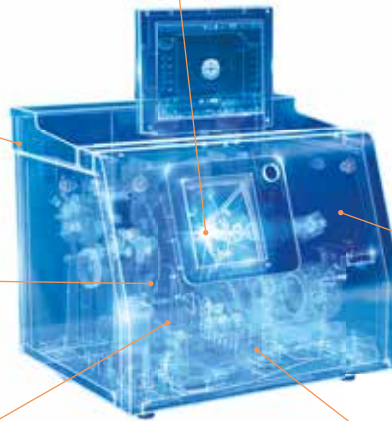
Robotic cable & connection



Parts & tools
Longer life time



Easy & fast maintenance



Milling



Dry cutting process to fully secure lens axis deviation during roughing and eliminate bad smell from MHI

Design for productivity



A unique start button



Embedded barcode reader

Need Essibox® solution

TRACERS AND BLOCKERS SOLUTIONS

PRODUCTIVITY

Complete range to meet all the professional need

Tess tracer and PRO B blockers are renowned worldwide for their performances and are used in Essilor Service Centres. Their design is optimized to meet the most demanding level of productivity and accuracy.



Patented frame groove acquisition for a perfect lens size adjustment and fitting

		PROB 300 Centering-blocking	PROB 300 Tracing centering-blocking
		Auto recognize holes	Auto recognize holes
		Pedal for blocking (option)	Pedal for blocking (option)
		Scanner holder	Scanner holder
		Weco block compatibility	Weco block compatibility
		Manual centering & Automatic blocking	Manual centering & Automatic blocking
		Lab use	Lab use
	E-TESS	Shape and drilling libraries	Shape and drilling libraries
			Reinforced table (>100kjob)
		User comfort	User comfort
		Shape modification	Shape modification
TESS			
High curve frame (up to base 9)	High curve frame (up to base 9)		High curve frame (up to base 9)

Remote edging solutions



Reinforce tracing table for lab volume*

A pedal (optional)



Start the blocking process without touching the screen

Pro-B 300



With or without robust reinforce tracing table

TESS



TESS



PROB 300



*Lifetime: more than 100 000 jobs

ESSIBOX

CONNECT

The connectivity solution to increase lab efficiency

ESSIBOX® connects multiple devices and centralises all data flow for a higher lab efficiency. Designed around an open communication system, it is an

upgradable solution that enables the gradual addition of new functions and services, enhancing profitability for the organisation.



Unlimited storage capacity and integrated database

Create an unlimited archive of shapes and drilling models with a easy management of the libraries:

- Multi-criteria searches (search by manufacturer, by collection or by model).
- Immediate visualisation of the shape and the related drilling pattern.



Creation of personalized shapes and drilling patterns

- Shape and drilling creation module.
- A user friendly design, based on the underlying principles used for computer aided design software.



Job management and LMS1 / PMS2 connection

- Automatic data transfer (shape, prescription, height, PD, lens type, etc.) to the centring and edging system with barcodes.
- Visualisation and management of all the jobs and their states of progress.
- Full integration within the lab and/or store network for an easy and quick access.



Multi-site

Centralized workshop and/or Job transfer between shops:

- Delegation for capability need.
- Delegation for functionality need (creative shape...).
- Delegation for availability.



5

.....
FURNITURE

OST 350

REFRACTION UNIT

Ophthalmic refraction unit for advanced practice



Chair maximum load	150kg
Sliding tabletop	Dimensions: 42cm x 82cm Max weight: 40kg
Versions	Right or left handed version
Power supply	110/230 V- 50/60 Hz
Dimensions	1.68 (L) x 1.80 (P) x 1.90 (H)m
Weight	240kg

Options

- Additional screen holder (OST048)
- Additional projector plate (OST202)
- Electric arm (OST380)
- Additional shelf (OST377)
- Drawer and shelf optimum design (OST376)

Colors available for lateral covers

Red: OST386 – Blue: OST384 – White: OST385

3 instruments sliding table.

Projector holder and self-balancing refractor arm².

Variable LED lighting, near vision lamp, fixed chinrest, dual voltage and accessories holder.

Wheel chair accessibility, magnetic brake and keypad on table side.

3 instruments table top.

Room light condition control at table side (keypad).

OST 250 OST 250H

REFRACTION UNITS

Ergonomic and comfortable motorized refraction unit for daily use



Chair maximum Load	150kg
Sliding tabletop	Dimensions: 42cm x 82cm Max. weight: 40kg
Versions	Right or left handed version
Power supply	110/230V-50/60Hz
Dimensions	1.26 (L) x 2.14 (W) x 1.90 (H) m
Weight	240kg

Options

- Additional screen holder (OST048)
- Additional projector plate (OST202)
- Electric arm (OST380)
- Additional shelf (OST377)
- Drawer and shelf optimum design (OST376)

Colors available for lateral covers

OST250 / Red: OST010 – Blue: OST020 – White: OST030
OST250H / Red: OST253 – Blue: OST251 – White: OST252



OST250C

OST 250 configuration

2 instruments sliding table

Projector holder and self-balancing refractor arm².

Variable LED lighting, near vision lamp, fixed chinrest, dual voltage, accessories holder.

Motorized chair with 90° tiltable back.

Drawer integrated.

Motorized table.

OST 250H configuration

OST 250 configuration.

Wheel chair accessibility, magnetic brake.

OST 150

REFRACTION UNIT

Comprehensive refraction unit for small place



Chair maximum load	150kg
Sliding tabletop	Dimensions: 42cm x 82cm Max weight: 50kg
Versions	Right or left handed version
Power supply	230V-50/60Hz
Dimensions	1.25 (L) x 1.5 (W) x 1.80 (H) m
Weight	195kg

Options

- 5cm spacer (OST046)
- Near vision lamp (OST208)
- Additional projector plate (OST202)
- Additional screen holder (OST048)
- Comon chinrest adapter (OST210)
- Accessories holder (OST047)

Colors available for lateral covers

Red: OST010 – Blue: OST020 – White: OST030

2 instruments sliding table.

Motorized chair.

Projector plate.

Self-balancing refractor arm.

LED lighting.

Lift-up elbow rests and footrest.

OST 100

REFRACTION UNIT

Comprehensive refraction unit for small place



Chair maximum load	150kg
Sliding tabletop	Dimensions: 42cm x 82cm Max weight: 50kg
Versions	Right or left handed version
Power supply	230V-50/60Hz
Dimensions	1.25 (L) x 1.5 (W) x 1.80 (H) m
Weight	195kg

Options

- 5cm spacer (OST046)
- Near vision lamp (OST208)
- Additional projector plate (OST202)
- Additional screen holder (OST048)
- Comon chinrest adapter (OST210)
- Accessories holder (OST047)

Colors available for lateral covers

Red: OST010 – Blue: OST020 – White: OST030

2 instruments sliding table.

Motorized chair.

Projector plate.

Self-balancing refractor arm.

LED lighting.

MOTORIZED SIDE TABLES AND STOOLS

TAM 50

MOTORIZED TABLE FOR ONE INSTRUMENT



Table size 435x600mm / Hmaxi 840mm / Hmini 670mm

Max loading 75kg

STOOLS

CHROME FIVE-STAR BASED



Exists in 3 colors 1080x480mm / Hmaxi 940mm / Hmini 670mm

Colors available Blue: RUEA18 – Red: RUEA19 – Black: RUEA17



6



LOCAL
PRODUCTS

HENSON 9000

OPTIMISED VISUAL FIELD SCREENING AND ANALYSIS

The Henson 9000 visual field analyser is the perfect tool for glaucoma screening and management, enabling eye care professionals to detect and monitor glaucoma progression.



We know that when screening for disease, the two statistics determining performance are sensitivity and specificity. We also know that a screening test needs to be conducted as quickly as possible, for the benefit of your practice and your patient. Until now, these factors have been interdependent. For example, quicker testing has been achieved but at the expense of accuracy. Or increased accuracy has limited speed. Now we have the Henson 9000 that does all three.

Top 3 benefits for your practice

- Small footprint
- High speed
- High specificity

New ZATA threshold algorithm conforms to Goldmann standard

Faster threshold testing using prior data for greater accuracy

Uses variable terminating criteria to further reduce test times especially in normal and severely damaged eyes

Fast single and multiple stimulus supra threshold programme

Numerous PC configuration options

Fully compatible with Henson 8000

Fully compliant DVLA Estermann test

Optional motorised chin rest controlled by PC

PDF format printouts available

Low maintenance costs

M' EYE E.STORE

OPTOMETRIC ACCESSORIES

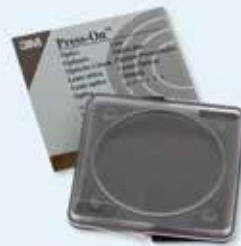
Solutions for accurate and precise visual assessment.



TRIAL FRAMES & TRIAL CASES



PRISMS



RETINOSCOPIES & OPHTHALMOSCOPIES



QUICKSEE - PORTABLE AUTOREFRACTOMETER



STEREO & ISHIHARA TESTS



PORTABLE SLIT LAMP



Keeler

DIRECT OPHTHALMOSCOPIES

A combination of optical perfection, superb ergonomics and versatile features make Keeler direct ophthalmoscopes the ideal choice. Whatever your requirement from basic examination to detailed diagnosis, there is a Keeler ophthalmoscope for you.

DIRECT OPHTHALMOSCOPIES

- Specialist Ophthalmoscope
- Professional Ophthalmoscope
- Practitioner Ophthalmoscope
- Standard Ophthalmoscope

OPHTHALMIC DIAGNOSTIC SETS

- Specialist Ophthalmoscope and Streak Retinoscope Set
- Specialist Ophthalmoscope and Spot Retinoscope Set
- Professional Ophthalmoscope and Streak Retinoscope Set
- Professional Ophthalmoscope and Spot Retinoscope Set



Ask your local Essilor Instrument department for more information about Keeler products.

ESSILOR TOTAL

MORE THAN PRODUCTS

Essilor Total is our renting solution for you as an Eye Care Professional. It offers you everything you need to successfully run your practice: technical products, service, free software update (remote), one monthly fee and 5 years guarantee.

- Instruments
- Service
- Free software update (remote)
- Insurance
- 5 years guarantee

We offer flexible rental solutions through our financing partner. Please contact your local Essilor Instrument department for more information.



For more information please contact your local
Essilor Instruments department